

## Features

- High Q, Low Insertion Loss
- High Attenuation
- High Power
- Surface Mount

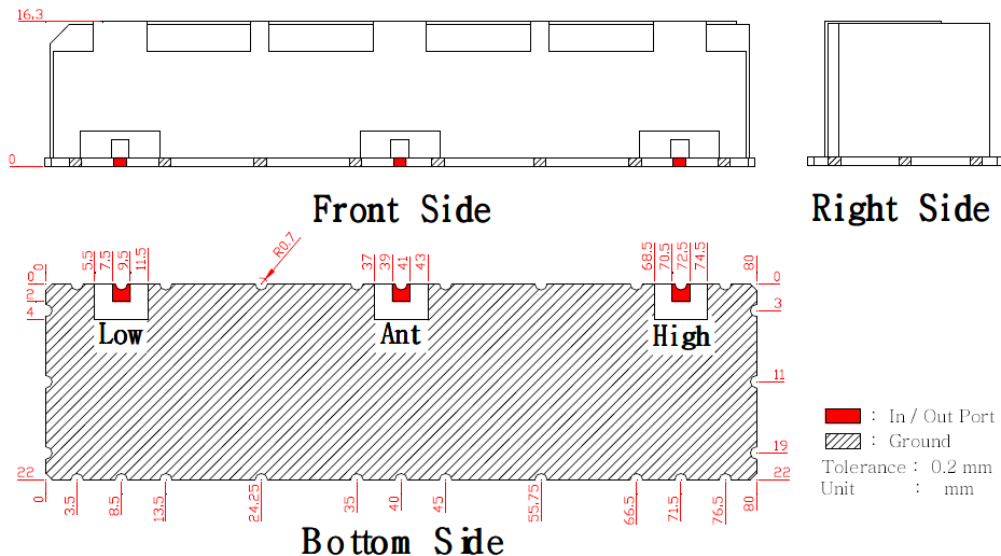
## Descriptions

Surface mount high power ceramic duplexer developed for UHF band applications.

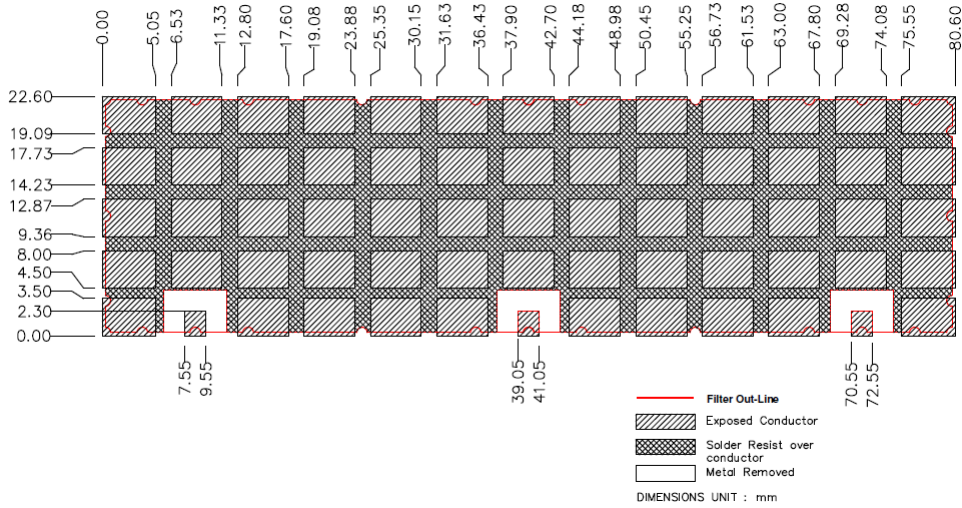
## Electrical Specifications

Parameter	Unit	Specification	
		Low(RX)	High(TX)
Center Frequency	MHz	387.5	408
Pass Bandwidth	MHz	$F_c \pm 7.5$ (380 ~ 395)	$F_c \pm 2$ (406 ~ 410)
Insertion Loss in BW	dB	2.5 max	2.5 max
Passband Ripple	dB	1.0 max	1.0 max
Return Loss in BW	dB	15.0 min	15.0 min
Attenuation	dB	55 min @ 406~410MHz	55 min @ 380~395MHz
Input Power	W	20 Avg max	
IN/OUT Impedance	$\Omega$	50	
Operating Temp. Range	$^{\circ}\text{C}$	-20 ~ +70	
Dimension	mm	80.0 x 22.0 x 16.3 (L x W x H)	

## Mechanical Drawing



## Recommended PCB Layout



## Electrical Response

