

## Features

- High Q, Low Insertion Loss
- High Attenuation
- High Power
- Surface Mount

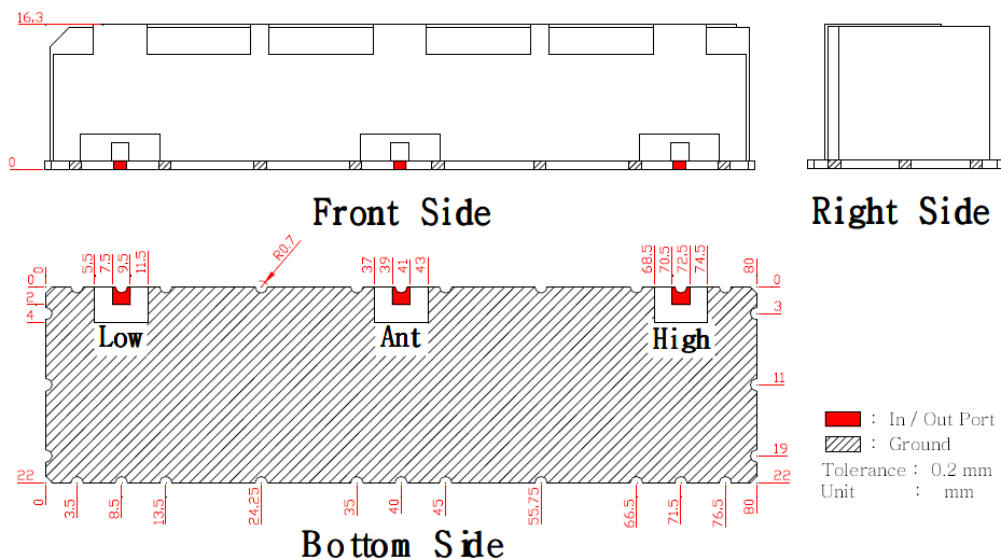
## Descriptions

Surface mount high power ceramic duplexer developed for UHF band applications.

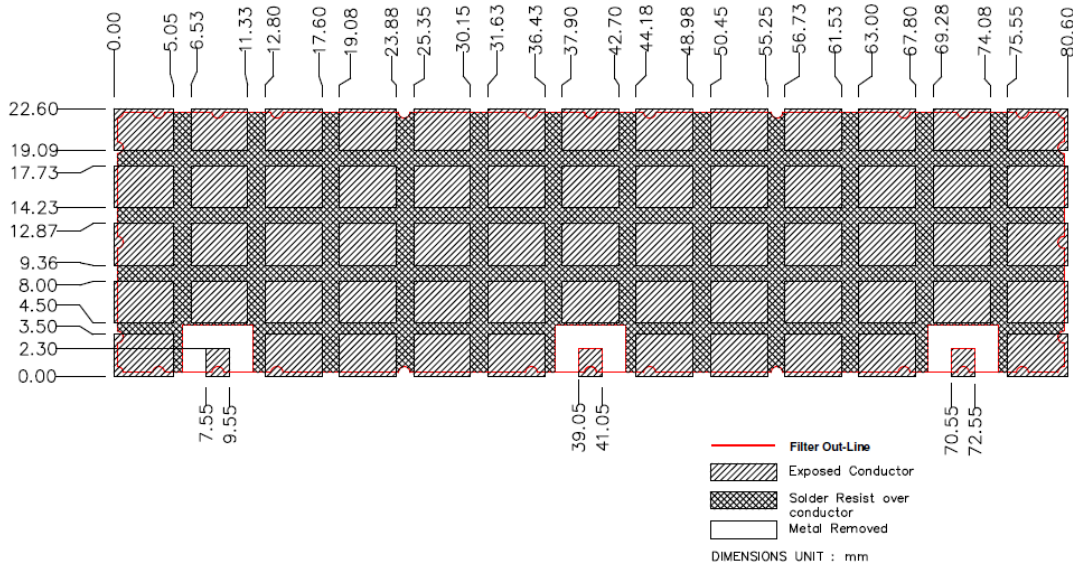
## Electrical Specifications

Parameter	Unit	Specification	
		Low(RX)	High(TX)
Center Frequency	MHz	382.5	392.5
Pass Bandwidth	MHz	Fc ±2.5 min (380~385)	Fc ±2.5 min (390~395)
Insertion Loss in BW	dB	3.0 max	3.0 max
Passband Ripple	dB	2.0 max	2.0 max
Return Loss in BW	dB	15.0 min	15.0 min
Attenuation	dB	55 min @ 390~395MHz	55 min @ 380~385MHz
Input Power	W	20 Avg max	
IN/OUT Impedance	Ω	50	
Operating Temp. Range	°C	-20 ~ +70	
Dimension	mm	80.0 x 22.0 x 16.3 ( L x W x H )	

## Mechanical Drawing



## Recommended PCB Layout



## Electrical Response

