

Features

- Low Insertion Loss
- High Attenuation
- High Power
- Rack Mount

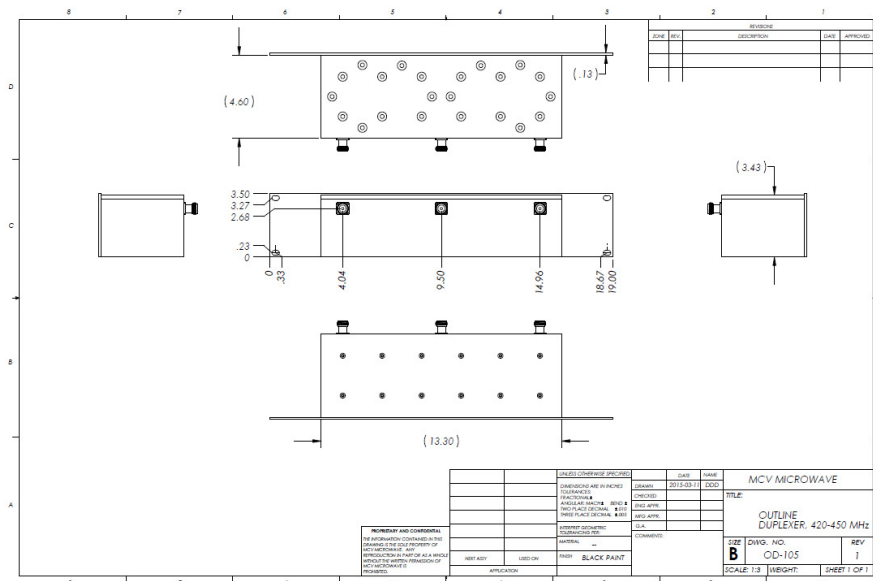
Descriptions

N type connector rack mount cavity duplexer developed for UHF band applications.

Electrical Specifications

Parameter	Unit	Specification	
Center Frequency	MHz	430	440
Frequency Range	MHz	420 ~ 435	435 ~ 450
Insertion Loss in Passband	dB	1.8 max	1.8 max
Passband Ripple	dB	0.6 max	0.6 max
Return Loss	dB	19 min	
Isolation	dB	70 min	
In/Out Impedance	Ω	50	
Input Average Power	Watt	200 CW max	
Operating Temperature	$^{\circ}\text{C}$	-20 ~ +60	
Connectors	-	N (Female) – All Ports	
Mounting Option	-	2RU 19" Rack Mount Front Panel	
Dimensions	inch	13.3 x 4.6 x 3.43 (L x W x H)	

Mechanical Outline Drawing



Electrical Response

